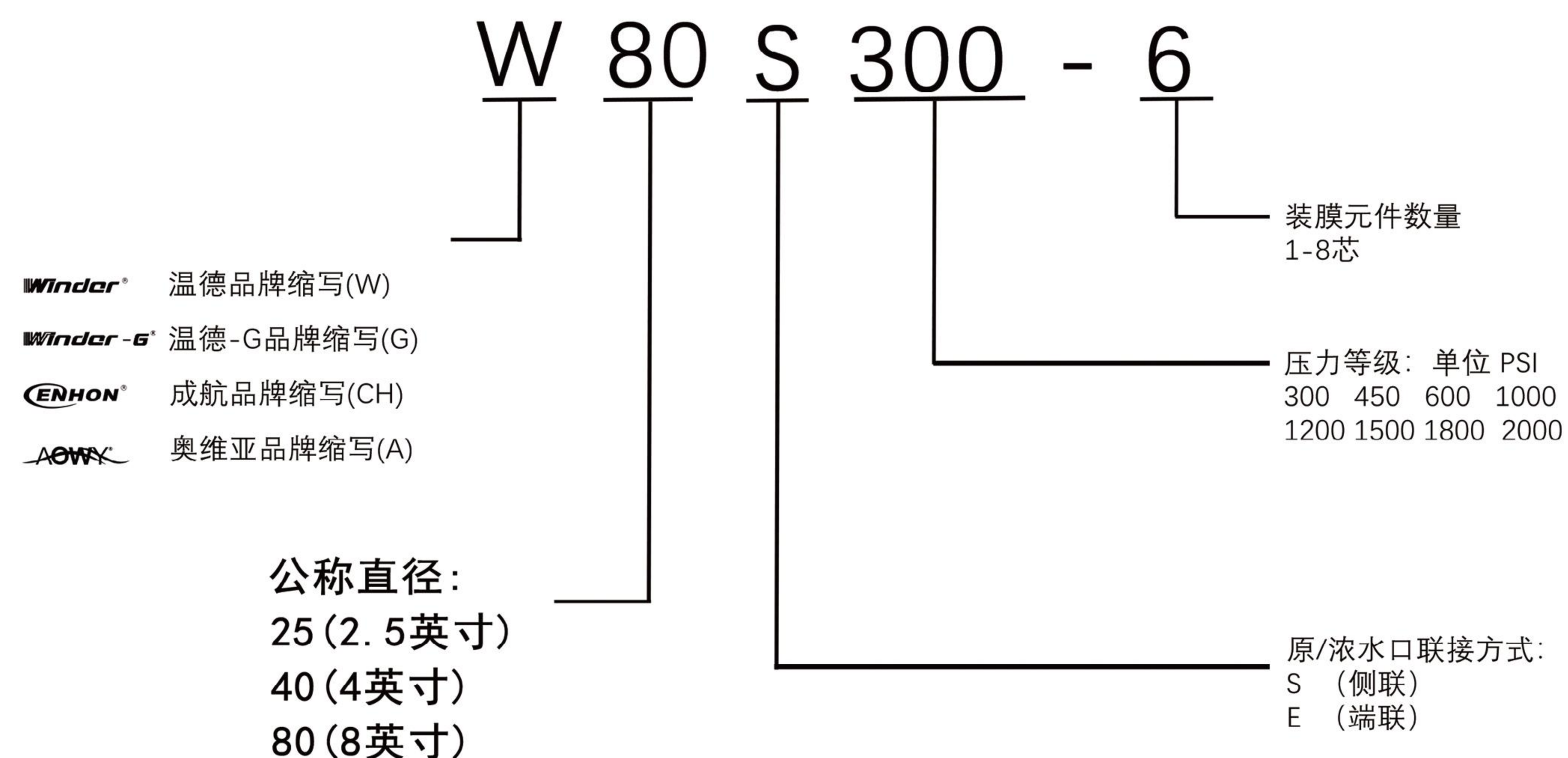


# CHENGDA MEMBRANE SHELL SERIES

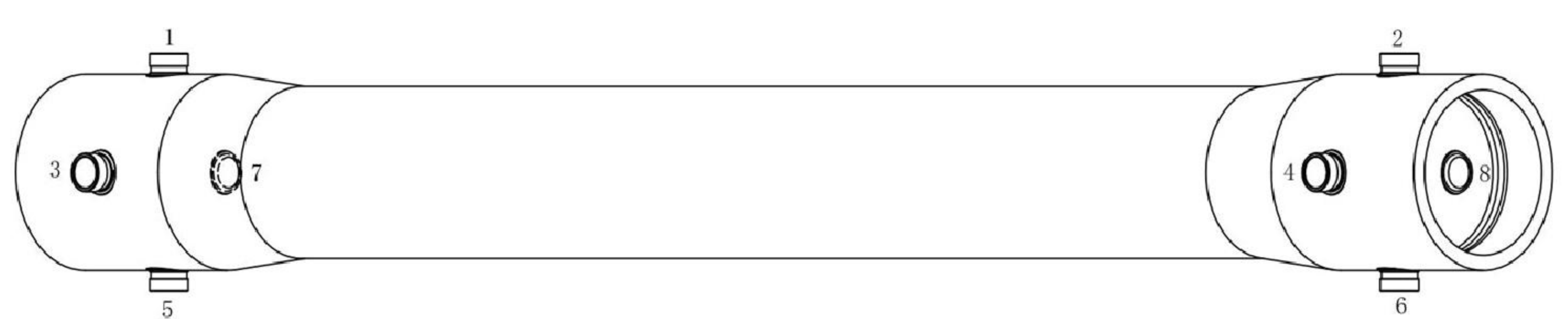
## SPECIFICATION



## PRODUCT MODELS SUMMERY

Brand Selection	Winder® Brand series			Winder-G® ENHON® Brand series			AOWX® Brand series	
Product Specification	8 inches	4 inches	2.5 inches	8 inches	4 inches	4 inch quick remove	8 inches	
Mountable Membrane	1to8 cores	1to4 cores	2540 2521 2514	1to7 cores	1to2 cores	1to2 cores	1to6 cores	
Connection Mode	End port (E)	Sind port (S)	End port (E)	Sind port (S)	End port (E)	End port (E)	Sind port (S)	
Pressure rating (PSI)	300	300	300	300	300	300	300	
	450	450	450	450	450			
	600	600	600	600	600			
	1000	1000	1000	1000	1000			
	1200	1200	1200	1200	1200			
		1500						
		1800						
		2000						

## FRP MEMBRNE HOUSING MODEL SELECTION TABLE

Brand selection	<input type="checkbox"/> Winder® <input type="checkbox"/> Winder-G® <input type="checkbox"/> ENHON® <input type="checkbox"/> AOWX®	
Lateralcoupling Raw/concentrated water outlet Position and size (Referto the figure on the right)	Lateral mouth size	<input type="checkbox"/> 1" <input type="checkbox"/> 1.5" <input type="checkbox"/> 2" <input type="checkbox"/> 2.5" <input type="checkbox"/> 3"
	Lateral mouth position	<input type="checkbox"/> 1 <input type="checkbox"/> 2 <input type="checkbox"/> 3 <input type="checkbox"/> 4 <input type="checkbox"/> 5 <input type="checkbox"/> 6 <input type="checkbox"/> 7 <input type="checkbox"/> 8
	Side mouth material selection	<input type="checkbox"/> A-304 <input type="checkbox"/> B-316L <input type="checkbox"/> C-2205 <input type="checkbox"/> D-2507 <input type="checkbox"/> E-other
	Copy-forest	Material <input type="checkbox"/> A-304 <input type="checkbox"/> B-316L <input type="checkbox"/> C-2205 <input type="checkbox"/> D-2507 <input type="checkbox"/> E-other
		Size <input type="checkbox"/> 1" <input type="checkbox"/> 1.5" <input type="checkbox"/> 2" <input type="checkbox"/> 2.5" <input type="checkbox"/> 3"
End coupling Raw/concentrated nozzle size	Quantity per unit	<input type="checkbox"/> 1 <input type="checkbox"/> 2 <input type="checkbox"/> 3 <input type="checkbox"/> 4
		
	2.5"Membrane shell	<input type="checkbox"/> 1/4"NPT-F
	4"Membrane shell	<input type="checkbox"/> 1/2"NPT-F <input type="checkbox"/> 3/4"NPT-F <input type="checkbox"/> RC3/4"
Water outlet size	8"Membrane shell	<input type="checkbox"/> 1.5"
	2.5"Membrane shell	<input type="checkbox"/> 1/4"NPT-F
	4"Membrane shell	<input type="checkbox"/> 1/2"NPT-F <input type="checkbox"/> 1/2"BSP-M <input type="checkbox"/> 1/4"NPT-F <input type="checkbox"/> 3/4"NPT-F
	8"Membrane shell	<input type="checkbox"/> 1"NPT-F <input type="checkbox"/> 1"BSP
Strap/saddle configuration	10"Membrane shell	<input type="checkbox"/> 1"NPT-F <input type="checkbox"/> 1"BSP
	2.5"Membrane shell	<input type="checkbox"/> 2
	4" Membrane shell	<input type="checkbox"/> 2 <input type="checkbox"/> 3
	8"Membrane shell	<input type="checkbox"/> 2 <input type="checkbox"/> 3 <input type="checkbox"/> 4
Trademark allocation	10"Membrane shell	<input type="checkbox"/> 2 <input type="checkbox"/> 3 <input type="checkbox"/> 4
	Barrel mark	<input type="checkbox"/> marked <input type="checkbox"/> unmarked
	End plate mark	<input type="checkbox"/> marked <input type="checkbox"/> unmarked
Use environment	other	<input type="checkbox"/> 1Custom identification Please provide a picture and identification content
	temperature	<input type="checkbox"/> -10°C~66°C <input type="checkbox"/> other
	PH value	<input type="checkbox"/> 3~11 <input type="checkbox"/> other
	Medium specification	<input type="checkbox"/> Surface water, groundwater, tap water <input type="checkbox"/> Seawater, subseawater <input type="checkbox"/> High concentration chemical wastewater (such as electroplating wastewater) <input type="checkbox"/> Municipal sewage <input type="checkbox"/> Brackish water <input type="checkbox"/> Printing and dyeing wastewater <input type="checkbox"/> Industrial wastewater <input type="checkbox"/> other



## Winder® BRAND SERIES

### 8"SIDE PORT RO MEMBRANE HOUSING



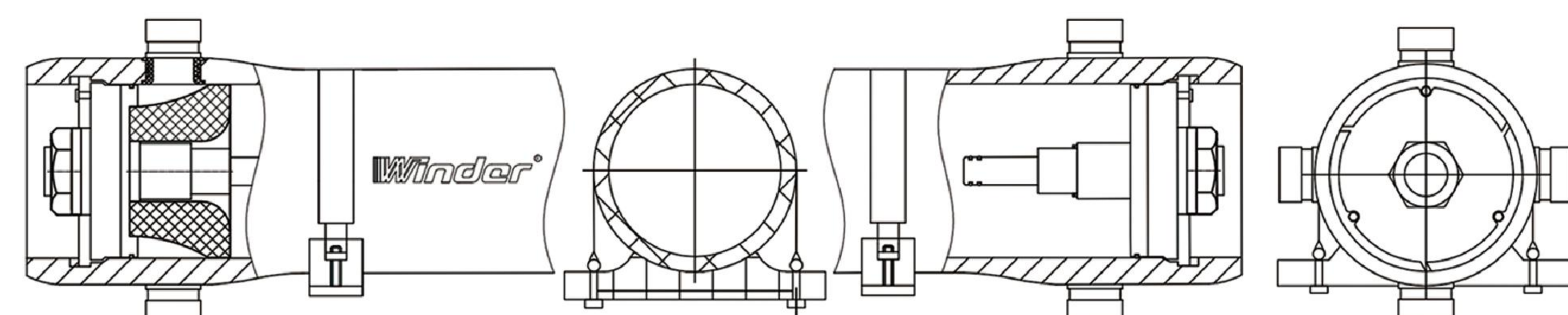
Side port low pressure series  
(300PSI/450PSI/600PSI)(1-8 cores)

Side port high pressure series  
(1000PSI/1200PSI/1500PSI  
/1800PSI/2000PSI)(1-8 cores)

#### PRODUCT MODEL

	8" side port / low pressure	8" side port/ high pressure
Model	W80S300/450/600	W80S1000/ 1200/1500/1800/2000
Design Pressure	300PSI/450PSI/600PSI	1000PSI/1200PSI/1500PSI/1800PSI/2000PSI
Cyclic Test	100,000 times	100,000 times
Burst Pressure	6倍/times	6倍/times
Elements Quantity	1-8	1-8
Operating pH Range	pH 3-11	pH 3-11
Operating Temperature	-10°C-66°C (14°F - 150°F)	-10°C-66°C (14°F - 150°F)
Feed/Concentration Port	1.5"/2"/2.5"/3"	1.5"/2"/2.5"/3"
Permeate Port	1"NPT-F 1"BSP	1"NPT-F 1"BSP

#### PRODUCT DRAWING



## Winder® BRAND SERIES

### 8"END PORT RO MEMBRANE HOUSING



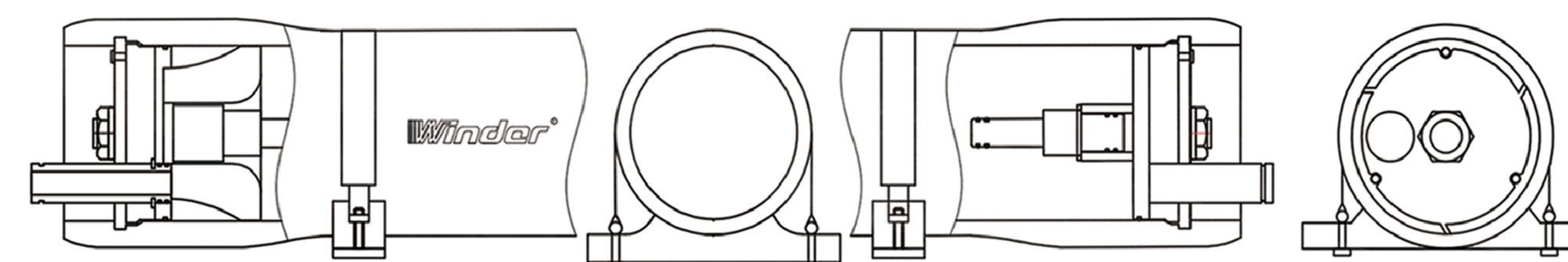
end port low pressure series  
(300PSI/450PSI/600PSI)(1-8 cores)

END port high pressure series  
(1000PSI/1200PSI)(1-8 cores)

#### PRODUCT MODEL

	8" end port/ low pressure	8" end port/ high pressure
Model	W80E300/450/600	W80E1000/1200
Design Pressure	300PSI/450PSI/600PSI	1000PSI/1200PSI
Cyclic Test	100,000 times	100,000 times
Burst Pressure	6倍/times	6倍/times
Elements Quantity	1-8	1-8
Operating pH Range	pH 3-11	pH 3-11
Operating Temperature	-10°C-66°C(14°F - 150°F)	-10°C-66°C(14°F - 150°F)
Feed/Concentration Port	1.5"	1.5"
Permeate Port	1"NPT-F 1"BSP	1"NPT-F 1"BSP

#### PRODUCT DRAWING





## Winder® BRAND SERIES 4"SIDE PORT RO MEMBRANE HOUSING



Side port low pressure series  
(300PSI/450PSI)(1-4 cores)

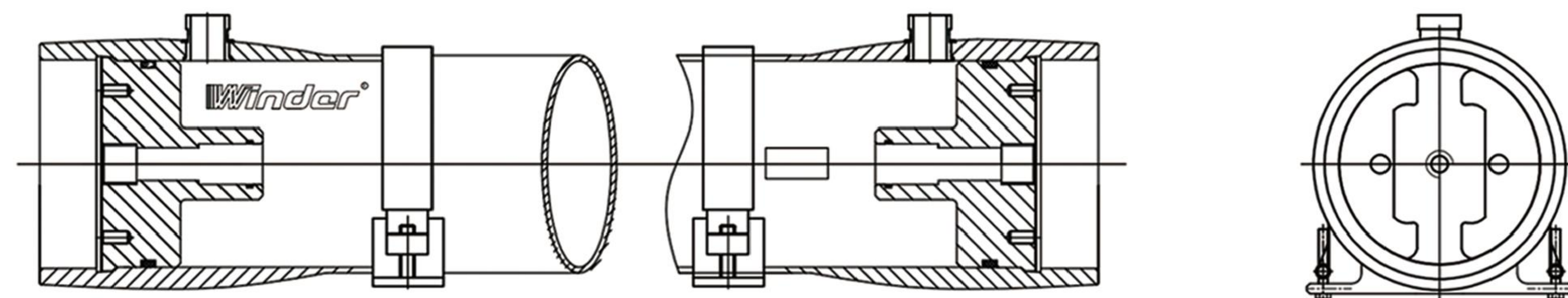


Side port high voltage series  
(600/1000/1200PSI)(1-4 cores)

### PRODUCT MODEL

	4" side port / low pressure	4" side port / high pressure
Model	W40S300/450	W40S600/1000/1200
Design Pressure	300PSI/450PSI	600PSI/1000PSI/1200PSI
Cyclic Test	100,000 times	100,000 times
Burst Pressure	6倍/times	6倍/times
Elements Quantity	1-4	1-4
Operating pH Range	pH 3-11	pH 3-11
Operating Temperature	-10°C-66°C(14°F - 150°F)	-10°C-66°C(14°F - 150°F)
Feed/Concentration Port	1"	1"
Permeate Port	3/4"NPT	1/4"NPT 1/2" BSP

### PRODUCT DRAWING



## Winder® BRAND SERIES 4"END PORT RO MEMBRANE HOUSING



end port low pressure series  
(300PSI/450PSI)(1-4 cores)

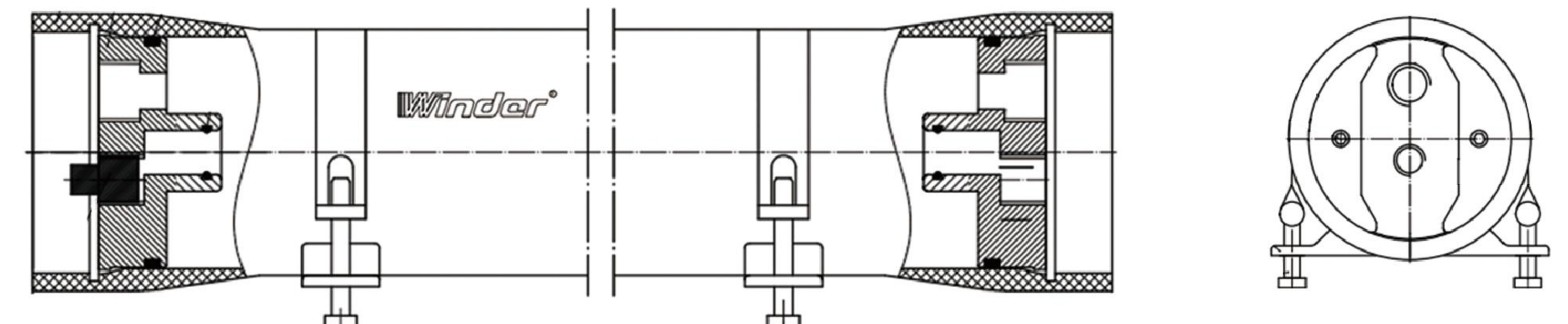


end port high voltage series  
(600/1000/1200PSI)(1-4 cores)

### PRODUCT MODEL

	4" end port / low pressure	4" end port / high pressure
Model	W40E300/450	W40E600/1000/1200
Design Pressure	300PSI/450PSI	600PSI/1000PSI/1200PSI
Cyclic Test	100,000 times	100,000 times
Burst Pressure	6倍/times	6倍/times
Elements Quantity	1-4	1-4
Operating pH Range	pH 3-11	pH 3-11
Operating Temperature	-10°C-66°C(14°F - 150°F)	-10°C-66°C(14°F - 150°F)
Feed/Concentration Port	3/4"NPT 1/2" BSP	RC3/4"
Permeate Port	1/2"NPT 1/2" BSP	1/4"NPT 1/2" BSP

### PRODUCT DRAWING





## Winder® BRAND SERIES 2.5"END PORT RO MEMBRANE HOUSING



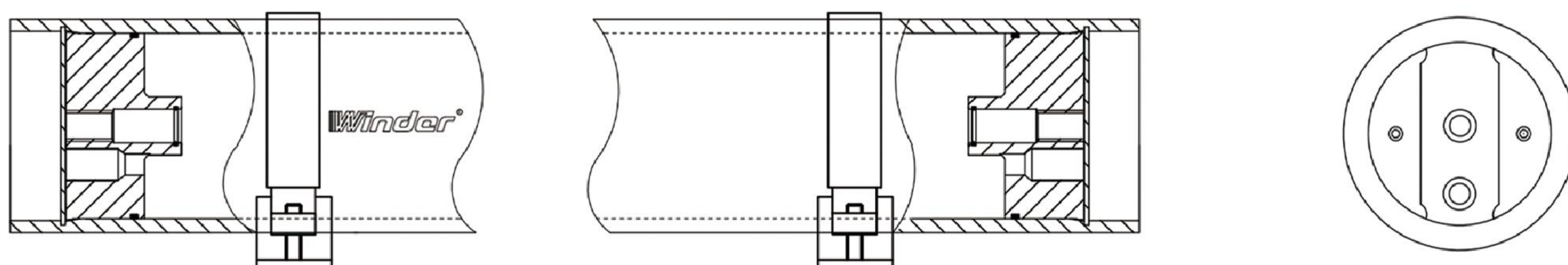
end port low pressure series  
(300PSI)(2540/2521/2514)

end port high pressure series  
(300PSI)(2540/2521/2514)

### PRODUCT MODEL

	2.5" end port / low pressure	2.5" end port / high pressure
Model	W25E300	W25E1000
Design Pressure	300PSI	1000PSI
Cyclic Test	100,000 times	100,000 times
Burst Pressure	6倍/times	6倍/times
Elements Quantity	2514、2521、2540	2514、2521、2540
Operating pH Range	pH 3-11	pH 3-11
Operating Temperature	-10°C-66°C(14°F - 150°F)	-10°C-66°C(14°F - 150°F)
Feed/Concentration Port	1/4"NPT 1/4 BSP	1/4"NPT 1/4 BSP
Permeate Port	1/4"NPT 1/4 BSP	1/4"NPT 1/4 BSP

### PRODUCT DRAWING



## Winder® BRAND SERIES 8"(OFFLINEMEMBRANE CLEANING) FRPMEMBRANE HOUSING



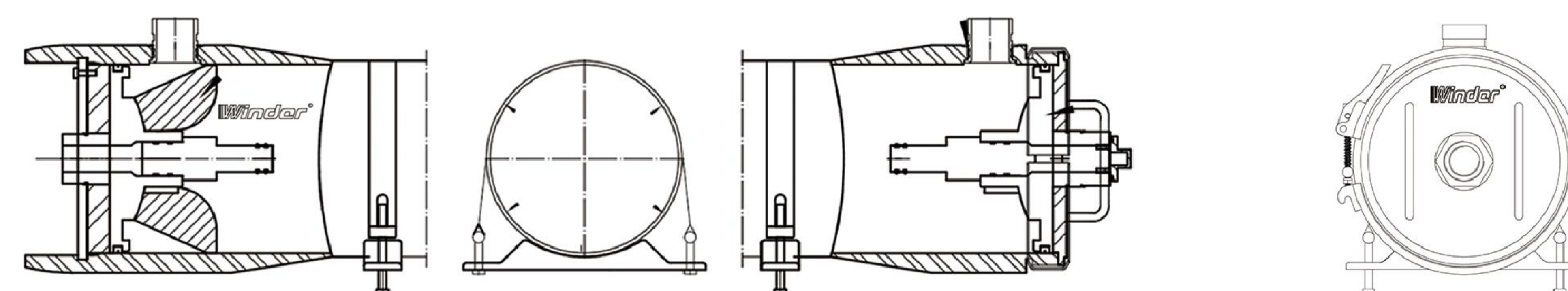
### DESCRIPTION

- The specially designed XM80S300 series, is a pressure vessel professionally designed for cleaning the membrane element. The special feature is its quick disassembly, which can make it convenient to frequently disassemble membrane elements during the cleaning process. It can enhance operation efficiency and lower time and labor cost. Besides, this product has excellent characteristic of anti-corrosion, and can withstand various corrosive cleaning agents.

### PRODUCT MODEL

	XM80S300
Model	XM80S300
Design Pressure	300PSI
Cyclic Test	100,000 times
Burst Pressure	4倍/times
Elements Quantity	1芯
Operating pH Range	pH3-11
Operating Temperature	-10°C-66°C(14°F - 150°F)

### PRODUCT DRAWING





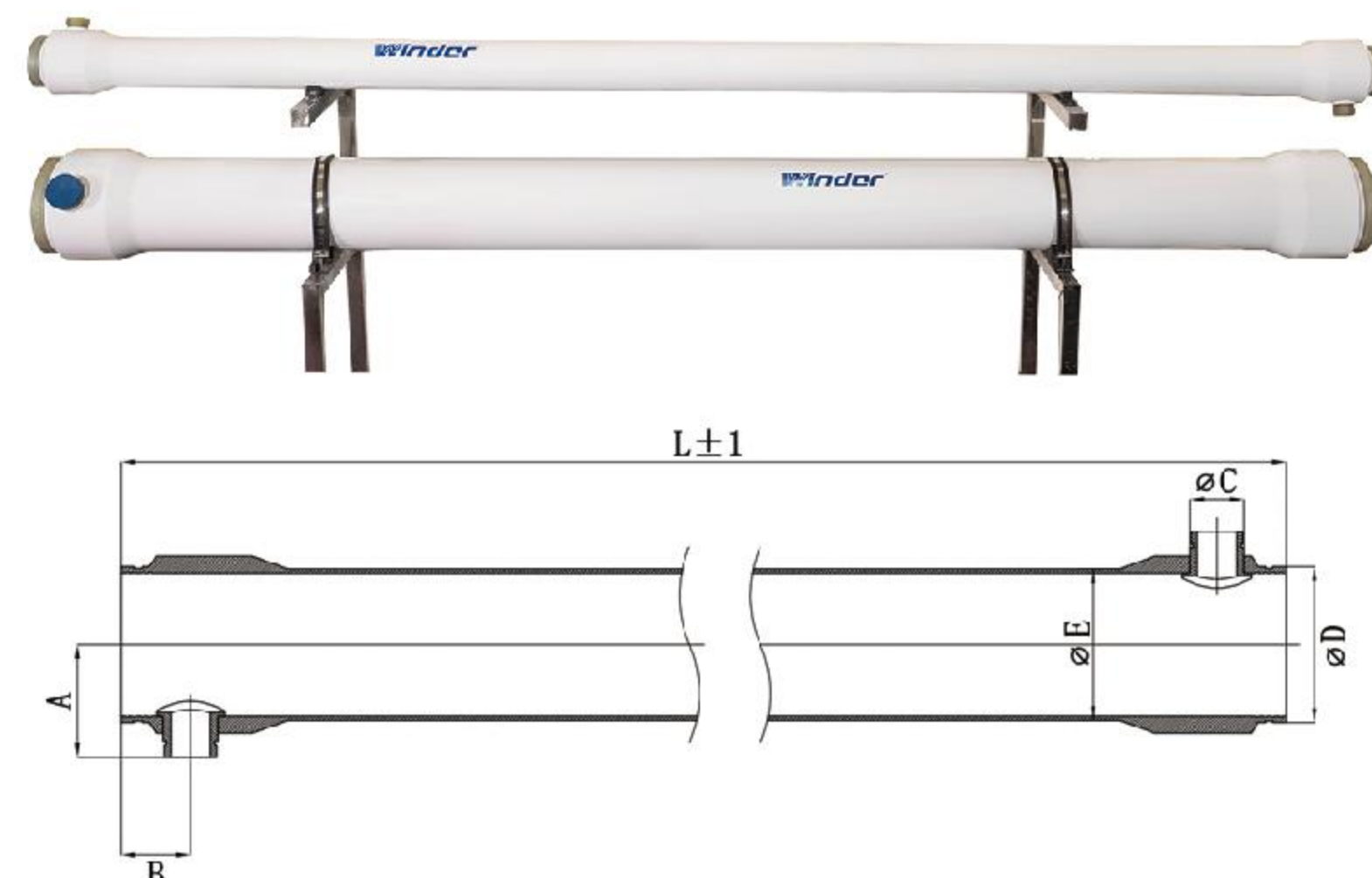
## Winder® WINDE BRAND MEMBRANE SHELL SERIES ST/DTRO(8"&10")



Membrane external components, namely pressure casing, also known as ST/DTRO glass fiber reinforced plastic membrane shell products have excellent characteristics such as corrosion resistance and high pressure resistance, which can be applied to complex media environments. The standard color is primary, white, and other colors are available. Since 2008, it has been used for large and medium-sized projects in landfills, coal chemical plants, sewage treatment plants, printing and dyeing plants and other industries at home and abroad.

Model/Pressure	8"&10"				
Pressure selection	75Bar	90Bar	120Bar	150Bar	200Bar
Length selection	1000mm	1150mm	1200mm	1250mm	1345mm
	Can be customized according to customer needs				

## TUBULAR MEMBRANE SHELL



The tubular membrane shell has excellent characteristics of high pressure resistance, corrosion resistance, etc., and can be applied to a variety of complex media environments. It is suitable for high concentration sewage treatment, low and medium concentration sewage, material separation and other fields. There are a variety of sizes and lengths to choose from, the standard color is white, other colors can be provided.

Technical Requirements: 1, recommended operating pressure: 0.2-0.5MPa, 2, maximum operating pressure: 0.8Mpa, 3, minimum outlet pressure: 0.7bar, 4, maximum operating temperature (PH:8): 60°C, 5, short-term cleaning maximum temperature range: 40°C, 6, continuous operation PH range: 2.0-12.0, 7, short-time cleaning PH range (40°C):1.0-13.0

Specification selection	4"	8"	10"
length selection	3000mm/4000mm		

## Winder-G® / ENHON® BRAND SERIES 8"SIDE PORT RO MEMBRANE HOUSING



Side port low pressure series  
(300PSI/450PSI/600PSI)(1-7cores)



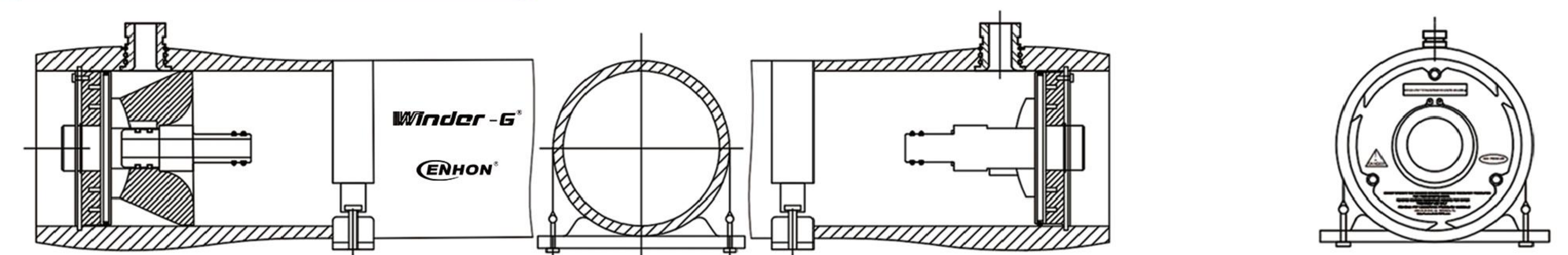
Side Port high pressure series  
(1000PSI/1200PSI)(1-7 cores)



### PRODUCT MODEL

	8" side port/ low pressure	8" side port/ high pressure
Model	G/CH80S300/450/600	G/CH80S1000/1200
Design Pressure	300PSI/450PSI/600PSI	1000PSI/1200PSI
Cyclic Test	100,000 times	100,000 times
Burst Pressure	4倍/times	4倍/times
Elements Quantity	1-7	1-7
Operating pH Range	pH 3-11	pH 3-11
Operating Temperature	-10°C-66°C (14°F - 150°F)	-10°C-66°C (14°F - 150°F)
Feed/Concentration Port	1.5"/2"/2.5"/3"	1.5"/2"/2.5"/3"
Permeate Port	1"NPT 1"BSP	1"NPT 1"BSP

### PRODUCT DRAWING





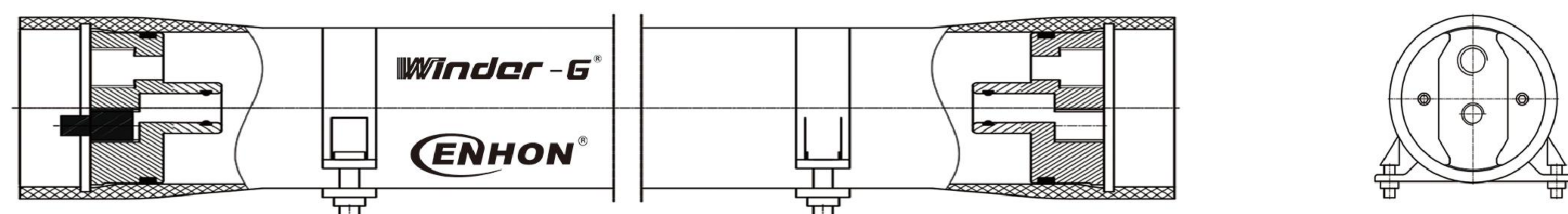
## Winder-G® / ENHON® BRAND SERIES 4"END PORT RO MEMBRANE HOUSING



### DESCRIPTION

**Winder-G® / ENHON® series:** As an exclusively style, FRP membrane housing with working pressure of 300 PSI (1-2elements), has passed the certifications of EU CE, ISO9001 quality management system, domestic hygiene license approval, and many other standards and specifications.

### PRODUCT DRAWING



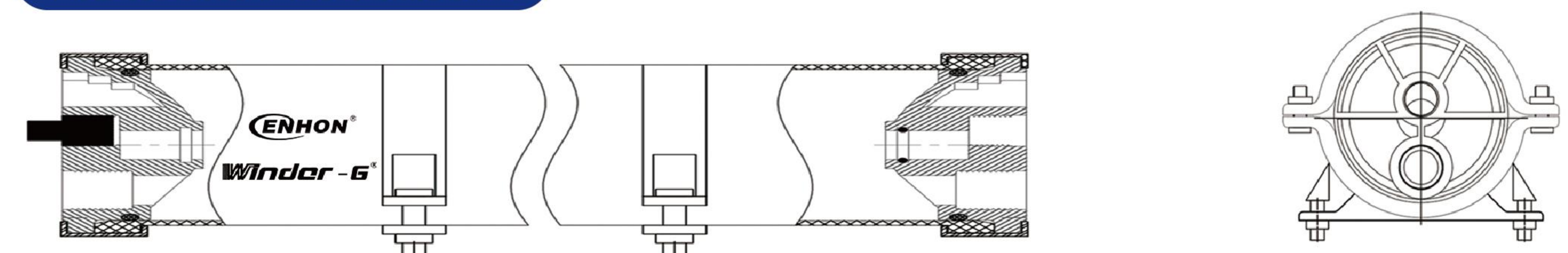
## Winder-G® / ENHON® BRAND SERIES 4"QUICK ASSEMBLY FRP MEMBRANE HOUSING



### DESCRIPTION

- Working Pressure: 300PSI, Length:1 element to 2 elements The product has passed the certifications of EU CE , ISO9001 quality management system, domestic hygiene license approval and other standards and specifications.It can withstand more than 100,000 times of fatigue tests and burst pressure tests at 4 times its design pressure. Applicable to a variety of complex media environments! Standard colors are white, blue, green, and other customized colors are available!.

### PRODUCT DRAWING





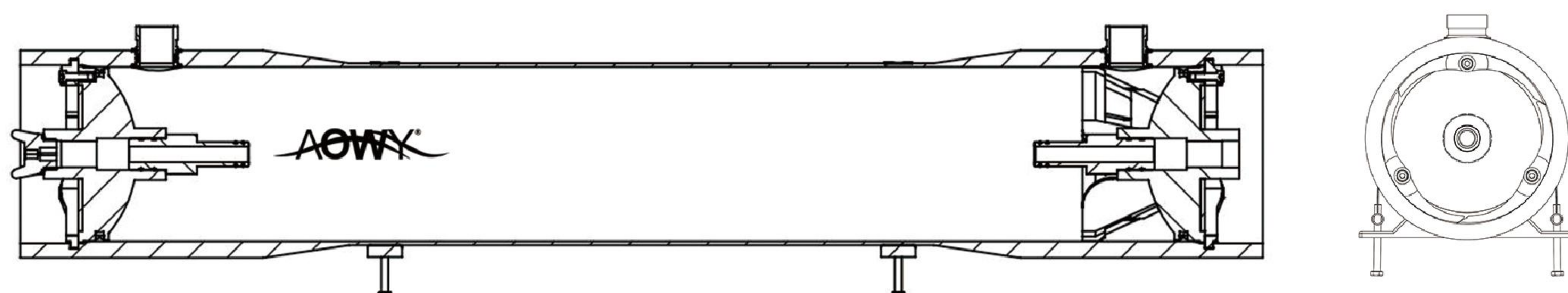
## AOWY® BRAND SERIES 8" SIDE PORT RO MEMBRANE HOUSING



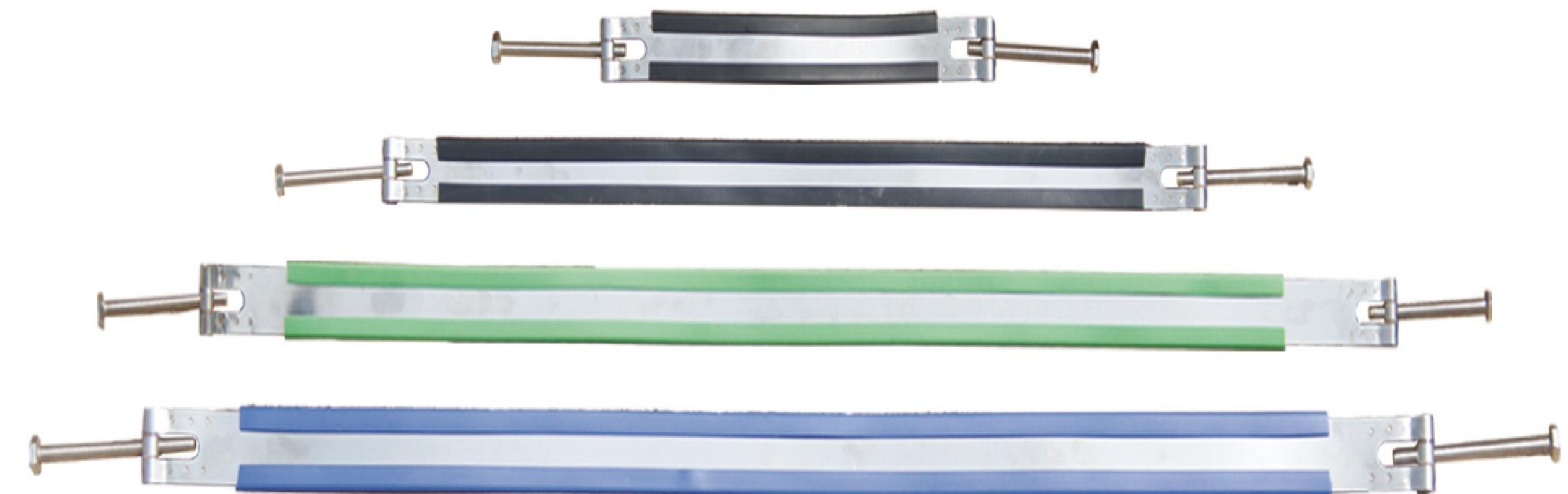
### DESCRIPTION

**AOWY** AOWY A80S Side joint low pressure series membrane shell, covering a working pressure of 300PSI, and can be loaded with 1-6 core membrane elements. The spherical surface pressure head, block are all made of self-developed alloy ABS modified raw materials, making them have high corrosion resistance, reinforcement, toughening, wear resistance, waterproof and other characteristics, making the products more stable and reliable. The spherical surface pressure head adopts the mechanical design of the integrated spherical surface, which makes the product stronger, more stable and better sealing during use;

### PRODUCT DRAWING



## CHENGDA 304 STAINLESS STEEL STRAP SERIES



Specification and model: 190mm - 1280mm

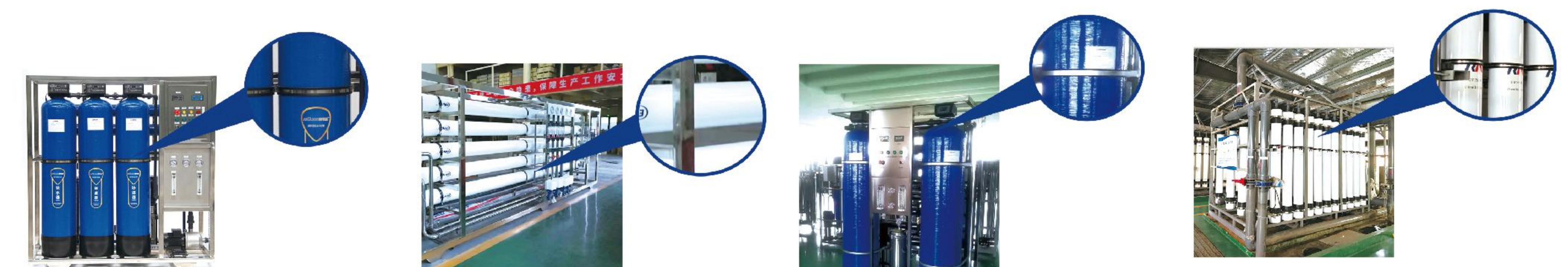
(support customized service)

Good toughness, high strength, good corrosion resistance

### DESCRIPTION

- Solid solder joint, nut guide groove design, chamfer design, nut hanging design;  
Colors can be customized, classic blue, classic green, classic black;  
Good toughness, high strength, corrosion and rust prevention, in softening, filtration, reverse osmosis, ultrafiltration and other water treatment equipment can be used, can be customized according to customer requirements.

### FIELD OF APPLICATION



In softening, filtration, reverse osmosis, ultrafiltration and other water treatment equipment can be used, can be customized according to customer requirements.



## Winder® HORIZONTAL FIBERGLASS FILTER SERIES

### HORIZONTAL FIBERGLASS FILTER



#### DESCRIPTION

**Winder®** Winder brand FRP filter series

Horizontal Models: Available in Side-In/Side-Out, Side-In/End-Out, and End-In/End-Out configurations. Filters are available in Pall and Parker models. The casing utilizes fiberglass winding technology for corrosion resistance, high pressure durability, and leak-proof performance. The surface features a baked paint finish for a sleek appearance, with environmentally friendly materials and color options.

#### TECHNICAL PARAMETER

NO.	Model number	GL80-150-20	GL80-150-40	GL80-150-60
1	Design pressure	150PSI	150PSI	150PSI
2	Cartridge length	20"	40"	60"
3	Number of Filters	1	1	1
4	Water yield(T/H)	15-25	30-40	50-70

#### CHENGDA FILTER EQUIPMENT SERIES



## Winder-G® VERTICAL GLASS FIBER FILTER SERIES

### PP MELT-BLOWN FILTER CORE LARGE FLOW FILTER



NO.	Model	Diameter	Height	F Height	C Height	Flow (T/H)
1	CD10-5	280	553	135.5	245.5	2
2	CD20-5	280	807	135.5	245.5	3
3	CD30-5	280	1061	135.5	245.5	4
4	CD40-5	280	1315	135.5	245.5	5-7

#### VERTICAL LARGE FLOW FILTER



NO.	Model	Diameter	Height	F Height	C Height	F/C Port	Flow (T/H)
1	CD-20-PALL	280	802	129	592	2"/3"	20-30
2	CD-20-PALL	280	1310	129	1100	3"	40-50

#### BAG FILTER



NO.	Model	Diameter	Height	F Height	C Height	F/C Port	Flow (T/H)
1	CD20-1B	280	720	139	520	2"	10-20
2	CD40-1B	280	1090	139	870	2"/3"	25-30

#### DESCRIPTION

**Winder®** Winder brand vertical FRP filter series

Vertical Models: Includes PP Melt-Blown Cartridge Filters, High Flow Cartridge Filters, and Bag Filters. Filter cartridges are guided by structural alignment features, ensuring automatic positioning for ease of use. The casing is manufactured using fiberglass winding technology, providing corrosion resistance, high pressure durability, and leak-proof performance. The surface is finished with a baked paint process for a sleek and attractive appearance. The materials used are environmentally friendly, with customizable color options.